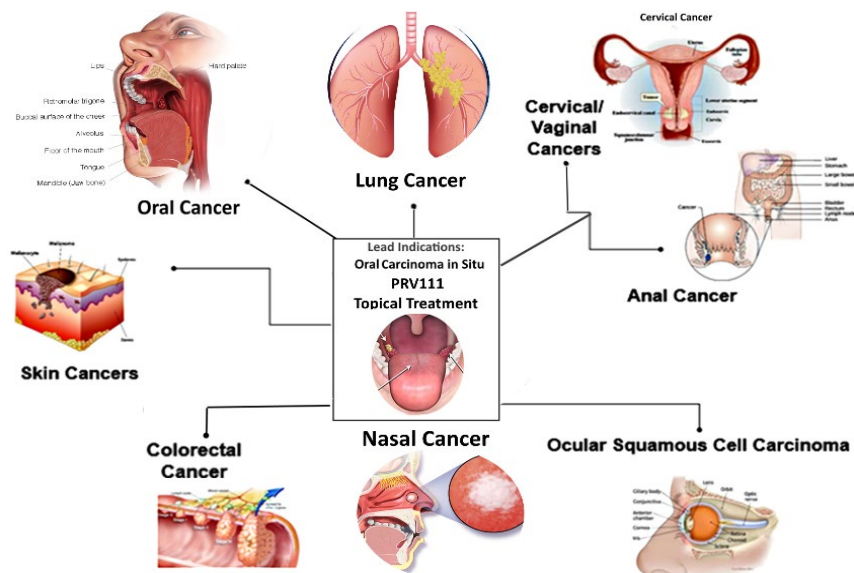


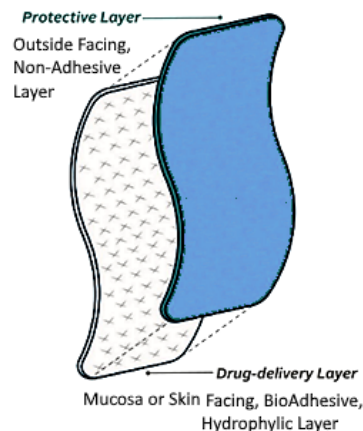
PRV111 based on PRV™ platform, is an innovative system that employs cisplatin-loaded nanoparticles, meticulously designed to target, and eliminate cancer cells within the tumor while simultaneously addressing regional lymph nodes. With its advanced bio adhesive delivery system, PRV111 offers a highly effective and localized treatment strategy, setting a new standard in cancer therapeutics.

PRV™ Platform Life Cycle



Why is PRV111 Needed?

- Current standard of care therapies administered for solid tumors can be very detrimental and taxing on a patient's overall health, well-being, and quality of life due to their severe toxicities.
- Localized treatments designed to administer highly potent drugs safer and more effectively, are missing in the Pharma landscape.
- **Our novel platform allows Privo scientists to reformulate highly potent cytotoxic drugs to have the ability to deliver and retain high concentrations localized in the tumor. This can significantly improve the efficacy of current therapies and decrease their systemic toxicities.**



Privo:technologies.

Tough On Cancer, Easy On Patients

PRV111 –Oncology Nanoengineered Topical Bioadhesive Patch

Proven Technology with Successful Phase 2 Clinical Data



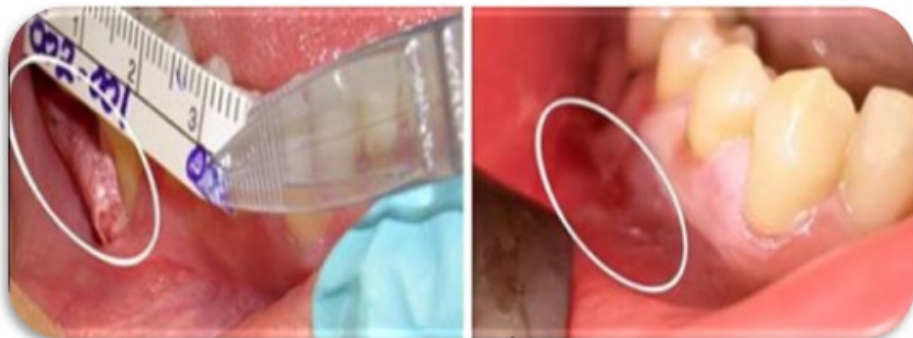
What is PRV111

PRV111 topical patch is powered by our cutting-edge nanoengineered platform technology which was developed in MIT's Bob Langer's Lab.

Key Takeaways:

- **PRV111 is a Phase 3 clinical ready asset**
- **Successfully completed clinical trials in a Phase 2 study meeting all primary and secondary endpoints ([NCT03502148](#))**
- **Clinical trial results published in [Nature Communications](#)**
- **Initial indication:** Oral carcinoma in situ
- **Regulatory Plan:** Obtain initial market approval in oral carcinoma in situ and rapidly expand into multiple other topical treatment markets
- **Large market:** PRV111 can be used on skin or any mucosa in invasive cancer and precancerous lesions such as high grade dysplasia, leukoplakia, actinic keratosis

Clinical Evidence: In the case of oral cavity cancer, Privo has clinically tested the topical patch (PRV111) embedded with cisplatin loaded nanoparticles in patients diagnosed with T1-T2 oral cancer.



100% reduction, Gum Tumor

Efficacy:

**Tumor volume reduction: >70%,
Response rate: 87%**

Safety:

**No Dose Limiting Toxicities
No Systemic Toxicity
No Related Serious Adverse Events**

How Does it work?

- PRV111 is a novel system comprising a unique formulation, including nanoparticles which non-covalently interact with payloads to increase drug dispersion and diffusion when dosed/applied to solid tumors.
- PRV111 is applied directly onto the tumor and the properties of the patch are bio adhesive so it will stick right onto the tumor, similar to a band-aid.
- You leave the patch in place for 10 minutes for the cisplatin loaded nanoparticles to penetrate below the epithelial surface.
- The patch is then removed and discarded.

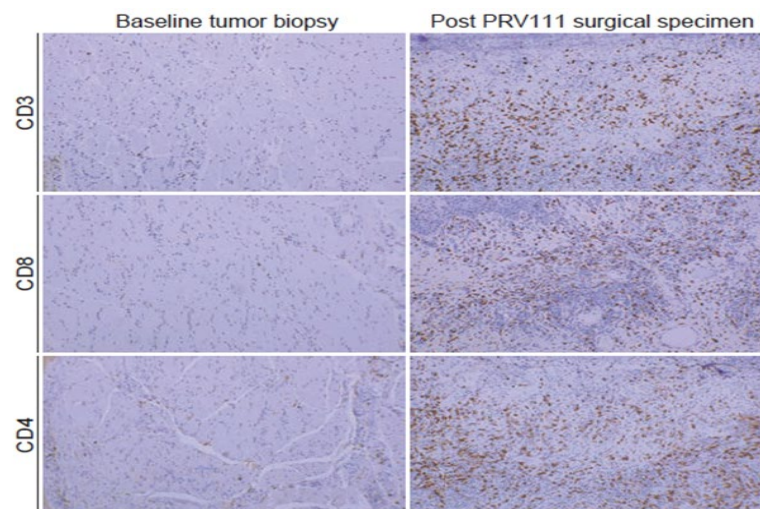


PRV111 Nanoengineered Design Attributes

- **Enhanced safety & efficacy**
 - Provide controlled, localized sustained release
 - Enhance penetration into tumor tissue
 - Minimize systemic exposure
 - Reach and enter regional lymph nodes
 - High cell uptake and local retention
 - Capable of encapsulation of multiple agents e.g. cisplatin + 5FU

Immune Response

- PRV111 shows a high degree of immunogenesis/immunomodulation as demonstrated by staining for tumor infiltrating lymphocytes.
- PRV111's immunomodulation properties can increase the treatment's durability.
- PRV111 combined with immunotherapy, can be an effective combination for increasing the number of patients who can respond to cancer immunotherapy.



What's next? fundraising for PRV111 Phase 3 registration enabling study

Visit www.Privotechnologies.com to watch a short video about Privo's mission to be "Tough on Cancer, Easy on Patients".